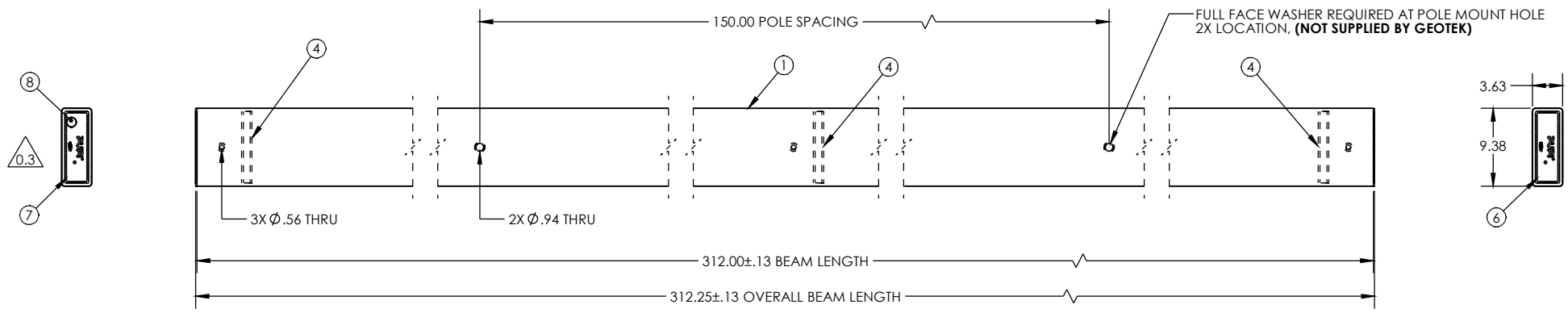
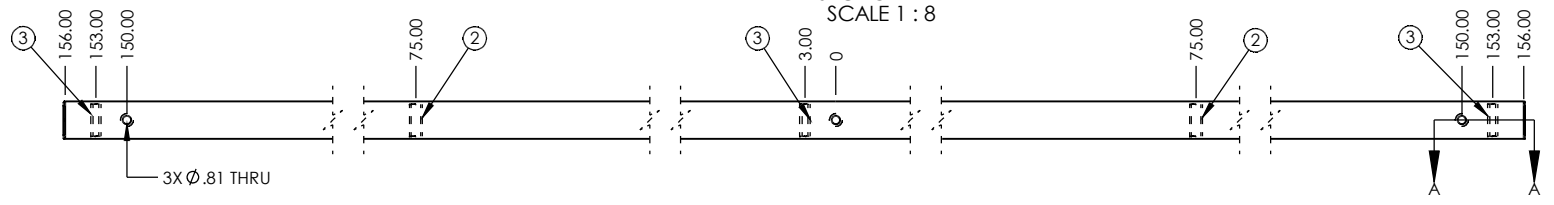
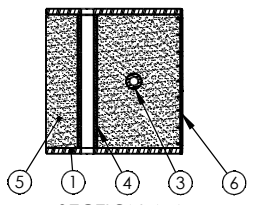


| ITEM NO. | PART NUMBER | DESCRIPTION | Description2 | QTY. |
|----------|---------------|-----------------------|----------------------------|------|
| 1 | FB-312-5000-2 | BEAM, PULTRUDED STOCK | SERIES 5000 x 312 in, GRAY | 1 |
| 2 | TG0938-0114 | BUSHING | 15/16 in x 3-1/8 in | 2 |
| 3 | TG0563-0002 | BUSHING | 9/16 in x 3-1/8 in | 3 |
| 4 | TG0813-0115 | BUSHING | 13/16 in x 8-5/8 in | 3 |
| 5 | FOAM | - | - | 1 |
| 6 | EC50-0050-2 | END CAP | SERIES 5000, GRAY | 1 |
| 7 | EC50-0049-2 | END CAP | SERIES 5000, GRAY | 1 |
| 8 | GA108051 | SNAP-IN PLUG, ROUND | 0.96" - 1.05" ID HOLE | 1 |

PUPI[®]
www.pupicrossarms.com

| REVISIONS | | | | |
|-----------|------|---|------------|----------|
| ECO | REV. | DESCRIPTION | DATE | INITIALS |
| | 0.1 | ADD FULL FACE WASHER NOTE | 2018-05-16 | NDH |
| | 0.2 | CORRECTED LONGITUDINAL LOAD RATING | 2018-06-07 | JCW |
| 4159 | 0.3 | ADDED EC50-0049 & GA108051 TO ASSEMBLY | 2018-08-03 | JCW |
| 4282 | 0.4 | REFLECT BEAM CHANGE AND UPDATE DRAWING FORMAT | 2018-12-07 | NDH |



- NOTES:
- CENTER OF HOLE(S) TO HOLE TOLERANCE ±0.06
 - CALCULATED ULTIMATE VERTICAL LOAD = 9,500 LBS. PER WIRE, 3 WIRES
 - CALCULATED ULTIMATE LONGITUDINAL LOAD = 5,290 LBS. PER WIRE, 3 WIRES $\triangle 0.2$
 - GEOTEK RECOMMENDS THAT A FULL-FACED WASHER BE USED AT POLE MOUNTING LOCATION **(NOT PROVIDED BY GEOTEK)**

---UNLESS OTHERWISE SPECIFIED---
 DIMENSIONS ARE IN INCHES
 INTERPRET DIM AND TOL PER ASME Y14.5-2009
 ANGULAR: MACH±2°
 BEND±2°
 ONE PLACE DECIMAL±0.1
 TWO PLACE DECIMAL±0.02

STATE: RELEASED 2018-12-07
 DRAWN: JCW 2017-11-09
 CHECKED: NDH 2018-12-07
 APPROVED: NDH 2018-12-07
 REPLACES: -

THIRD ANGLE PROJECTION

PROPRIETARY AND CONFIDENTIAL
 THE INFORMATION CONTAINED IN THIS DRAWING IS THE SOLE PROPERTY OF GEOTEK. ANY REPRODUCTION IN PART OR AS A WHOLE WITHOUT THE WRITTEN PERMISSION OF GEOTEK IS PROHIBITED.

CUSTOMER SIGNATURE: _____ DATE: _____

GEOTEK
A Whole New World of Composites

1421 SECOND AVE NW
 STEWARTVILLE, MN 55976
 (800) 533-1680
 www.geotekinc.com

DESCRIPTION:
TANGENT ASSEMBLY, SERIES 5000
312 in, RUS 55

SIZE: DWG. NO. **B TX500031255H2** BEAM COLOR: REV. **GRAY 0.4**

SCALE: 1:12 | WEIGHT: 157.66 LBS. SHEET 1 OF 1