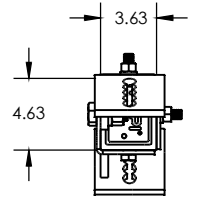
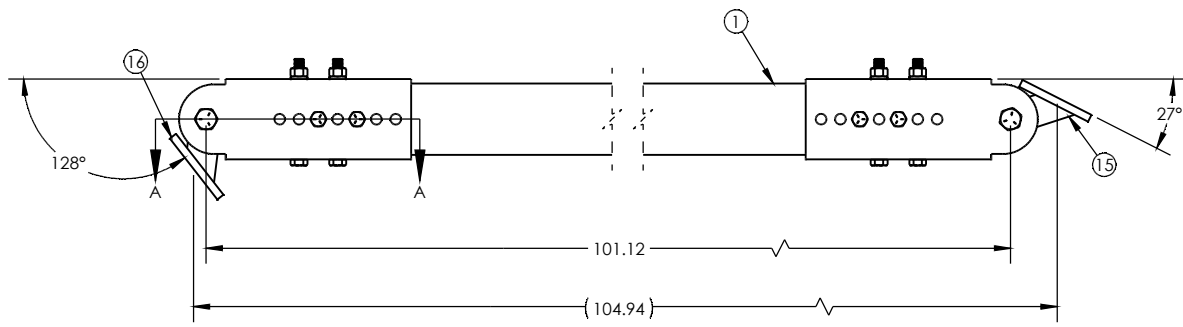
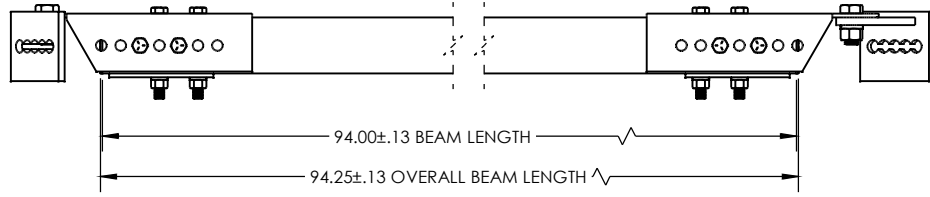
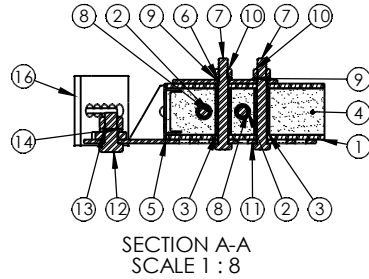


ITEM NO.	PART NUMBER	DESCRIPTION	Description2	QTY.
1	FB-094-3000-2	BEAM, PULTRUDED STOCK	SERIES 3000 x 94 in, GRAY	1
2	TG0688-0039	BUSHING	11/16 in x 3-15/16 in	4
3	TG0688-0040	BUSHING	11/16 in x 3 in	4
4	FOAM	-	-	1
5	EC30-0002-2	END CAP	SERIES 3000, GRAY	2
6	PL-0033	PLATE, X-BRACE		2
7	HB0625-0018	HEX BOLT	5/8 in - 11 x 5-1/2 in	4
8	HB0625-0002	HEX BOLT	5/8 in - 11 x 6-1/2 in	4
9	LW0625-0004	LOCK WASHER	5/8 in	8
10	HN0625-0004	HEX NUT	5/8 in - 11	8
11	BK-0038	BRACKET, BRACE		2
12	HB0875-0013	HEX BOLT	7/8 in - 9 x 2 in	2
13	LW0875-0010	LOCK WASHER	7/8 in	2
14	HN0875-0006	HEX NUT	7/8 in - 9	2
15	BK-0064	BRACKET ASSEMBLY, BRACE	HD, LEFT	1
16	BK-0067	BRACKET ASSEMBLY, BRACE	HD, RIGHT	1

PUPI[®]
www.pupicrossarms.com

REVISIONS				
ECO	REV.	DESCRIPTION	DATE	INITIALS
4119	0.1	REPLACE EC30-0030-2 WITH EC30-0002-2	2018-06-25	AJH



- NOTES:
 1. CENTER OF MOUNT HOLE(S) TO HOLES TOLERANCE ±0.06
 2. ULTIMATE LOAD OF 20,000 LBS. (TENSION)

---UNLESS OTHERWISE SPECIFIED--- DIMENSIONS ARE IN INCHES INTERPRET DIM AND TOL PER ASME Y14.5-2009 ANGULAR: MACH±2° BEND ±2° ONE PLACE DECIMAL ±0.1 TWO PLACE DECIMAL ±0.02	STATE: RELEASED	2018-06-25
	DRAWN: JCW	2018-05-07
	CHECKED: JCW	2018-06-25
	APPROVED: JCW	2018-06-25
PROPRIETARY AND CONFIDENTIAL THE INFORMATION CONTAINED IN THIS DRAWING IS THE SOLE PROPERTY OF GEOTEK. ANY REPRODUCTION IN PART OR AS A WHOLE WITHOUT THE WRITTEN PERMISSION OF GEOTEK IS PROHIBITED.	THIRD ANGLE PROJECTION	
CUSTOMER SIGNATURE:	DATE:	

GEOTEK
A Whole New World of Composites

1421 SECOND AVE NW
 STEWARTVILLE, MN 55976
 (800) 533-1680
 www.geotekinc.com

DESCRIPTION:
KNEE BRACE ASSEMBLY, SERIES 3000
 104.94 in

SIZE: DWG. NO.	BEAM COLOR:	REV:
B K0105TM42062	GRAY	0.1
SCALE: 1:24 WEIGHT: 73.14 LBS	SHEET 1 OF 1	