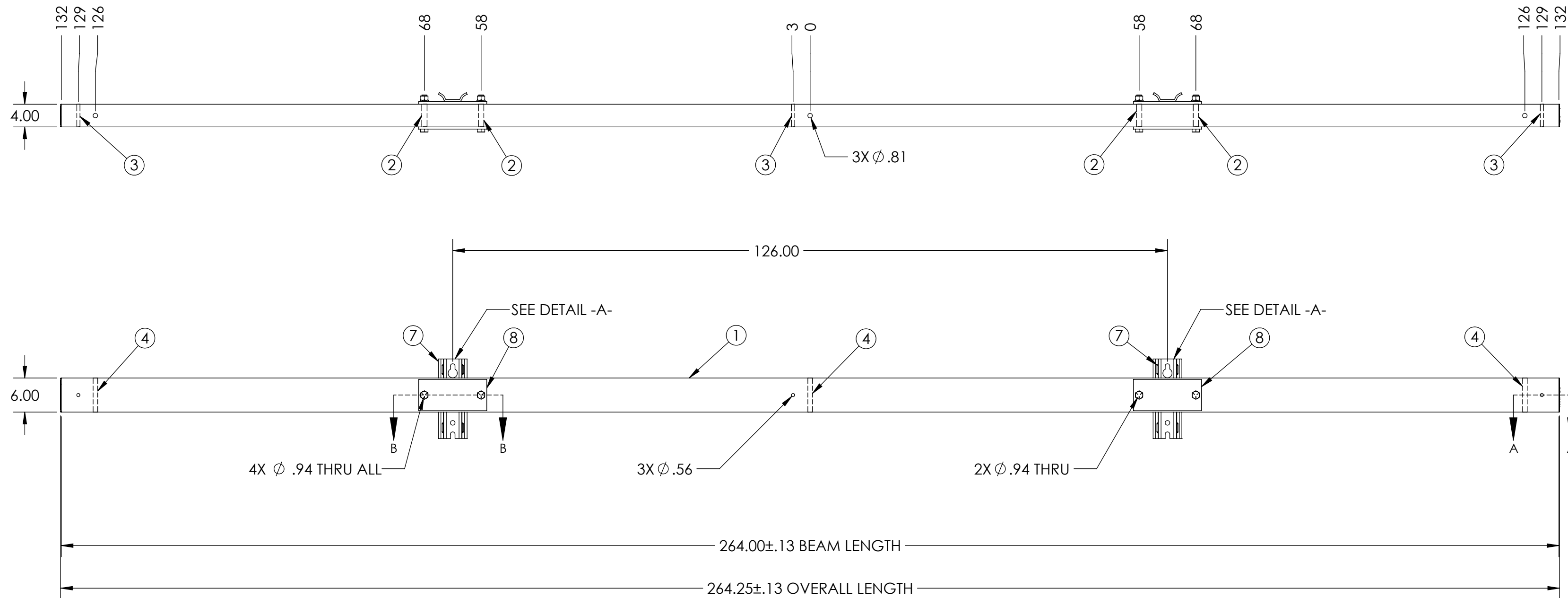
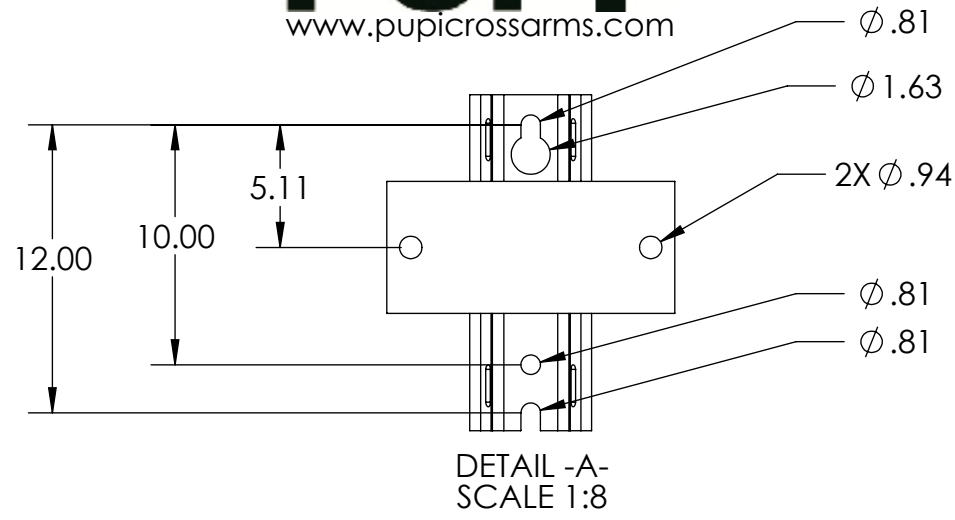
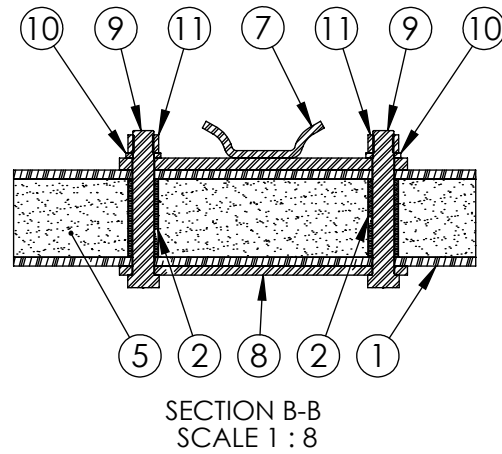
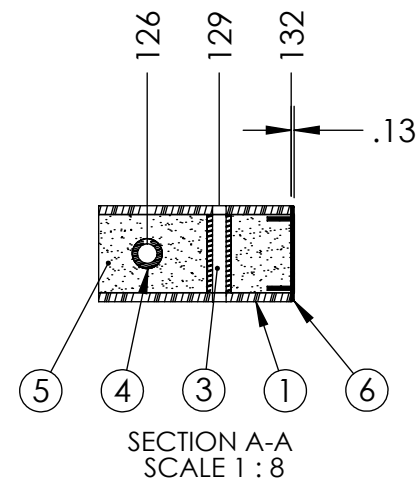


ITEM NO.	PART NUMBER	DESCRIPTION	DESCRIPTION 2	QTY
1	FB-264-4000-2	BEAM, PULTRUDED STOCK	SERIES 4000 x 264 in, GRAY	1
2	TG0938-0056	BUSHING	15/16 in x 3-1/4 in	4
3	TG0563-0050	BUSHING	9/16 in x 3-1/4 in	3
4	TG0813-0053	BUSHING	13/16 in x 5-1/4 in	3
5	FOAM	-	-	1
6	EC40-0006-2	END CAP	SERIES 4000, GRAY	2
7	TM-0032	MOUNT ASSEMBLY, TANGENT	SPECIAL	2
8	PL-0013	PLATE, FRONT		2
9	HB0875-0015	HEX BOLT	7/8 in - 9 x 6 in	4
10	LW0875-0010	LOCK WASHER	7/8 in	4
11	HN0875-0006	HEX NUT	7/8 in - 9	4

PUPI[®]
www.pupicrossarms.com

REVISIONS			
REV.	DESCRIPTION	DATE	INITIALS
0.1	UPDATED LOAD INFORMATION	2013-03-27	CAS
0.2	REDRAWN IN SOLIDWORKS	2013-03-28	RAF



NOTES:
1. CENTER OF MOUNT HOLE(S) TO HOLES TOLERANCE ± 0.06
2. ULTIMATE VERTICAL LOAD = 9,000 LBS PER WIRE, 3 WIRES

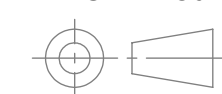
-----UNLESS OTHERWISE SPECIFIED-----
DIMENSIONS ARE IN INCHES
INTERPRET DIM AND TOL PER ASME Y14.5-2009
ANGULAR: MACH $\pm 2^\circ$
BEND $\pm 2^\circ$
TWO PLACE DECIMAL ± 0.02
THREE PLACE DECIMAL ± 0.005

PROPRIETARY AND CONFIDENTIAL
THE INFORMATION CONTAINED IN THIS DRAWING IS THE SOLE PROPERTY OF GEOTEK. ANY REPRODUCTION IN PART OR AS A WHOLE WITHOUT THE WRITTEN PERMISSION OF GEOTEK IS PROHIBITED.

STATE: RELEASED 2013-03-28
DRAWN: RAF 2013-03-28
CHECKED: CAS 2013-03-28
APPROVED: CAS 2013-03-28

MATERIAL:
FINISH:
REPLACES:

THIRD ANGLE PROJECTION



GEOTEK
A Whole New World of Composites
1421 SECOND AVE NW
STEWARTVILLE, MN 55976
(800)-533-1680
www.geotekinc.com

DESCRIPTION:
TANGENT ASSEMBLY, SERIES 4000
264 in, RUS 41H

SIZE DWG. NO. REV
C TD400026441H2 0.2
SCALE: 1:16 WEIGHT: 181.03 LBS SHEET 1 OF 1