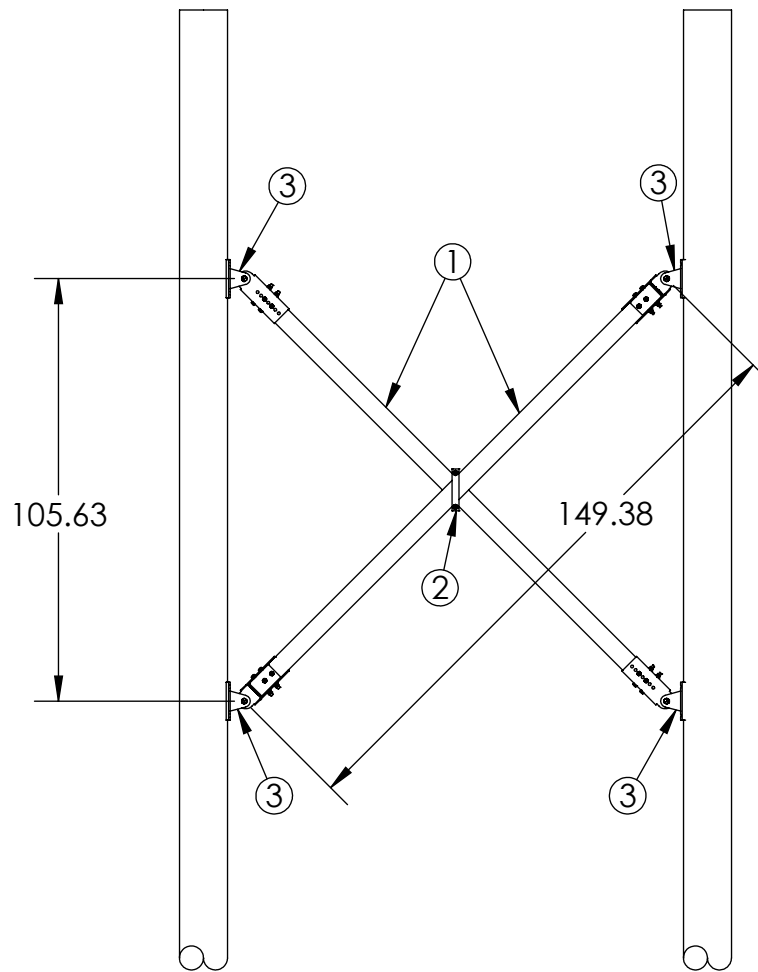
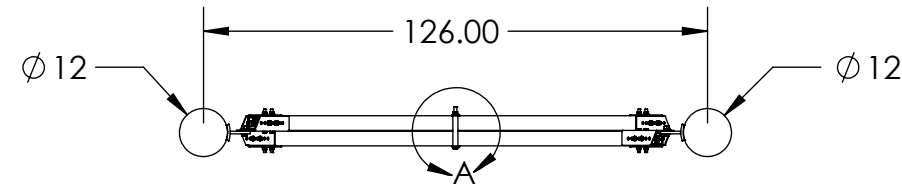
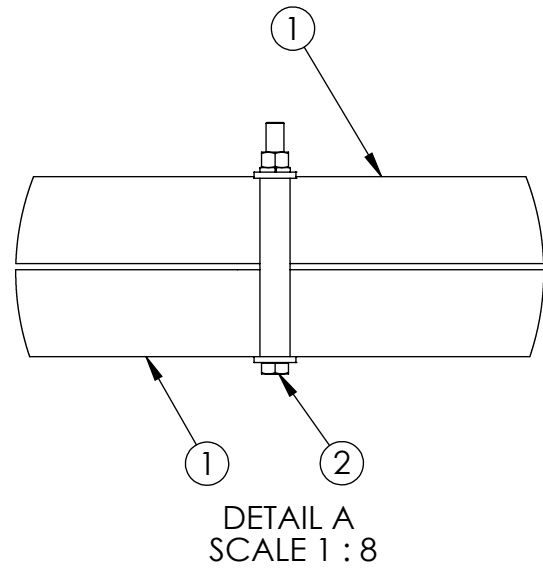


ITEM NO.	PART NUMBER	DESCRIPTION	DESCRIPTION 2	QTY
1	XBR30001260312	X-BRACE ASSEMBLY, SERIES 3000	149.4 in	2
2	BMB-037	HARDWARE KIT, CENTER CLAMP	SD	1
3	BMB-041	HARDWARE KIT, X-BRACE	SD TEE	4

0.1

PUPI[®]
www.pupicrossarms.com

REVISIONS			
REV.	DESCRIPTION	DATE	INITIALS
0.1	REPLACE ALL HARDWARE INTO HARDWARE KITS	2013-12-27	RAF



NOTES:
1. ILLUSTRATION AS SHOWN WITH Ø 12" POLES. CUSTOMER TO VERIFY FOR PROPER FIT FOR X-BRACES.

<p>-----UNLESS OTHERWISE SPECIFIED----- DIMENSIONS ARE IN INCHES INTERPRET DIM AND TOL PER ASME Y14.5-2009 ANGULAR: MACH ±2° BEND ±2° TWO PLACE DECIMAL ±0.02 THREE PLACE DECIMAL ±0.005</p>	STATE: RELEASED	2014-01-03
	DRAWN: RAF	2013-05-06
	CHECKED: BRH	2014-01-03
	APPROVED: BRH	2014-01-03
	MATERIAL:	
	FINISH:	
	REPLACES:	
<p>PROPRIETARY AND CONFIDENTIAL THE INFORMATION CONTAINED IN THIS DRAWING IS THE SOLE PROPERTY OF GEOTEK. ANY REPRODUCTION IN PART OR AS A WHOLE WITHOUT THE WRITTEN PERMISSION OF GEOTEK IS PROHIBITED.</p>	THIRD ANGLE PROJECTION	

<p>GEOTEK <i>A Whole New World of Composites</i></p>	1421 SECOND AVE NW STEWARTVILLE, MN 55976 (800) 533-1680 www.geotekinc.com	
	DESCRIPTION: X-BRACE SYSTEM, SERIES 3000	
SIZE: B	DWG. NO.: XBR3020126SPX2	REV.: 0.1
SCALE: 1:48		WEIGHT: 210.48 LBS
		SHEET 1 OF 1