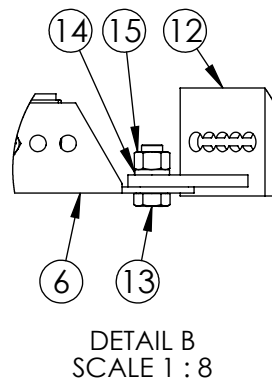
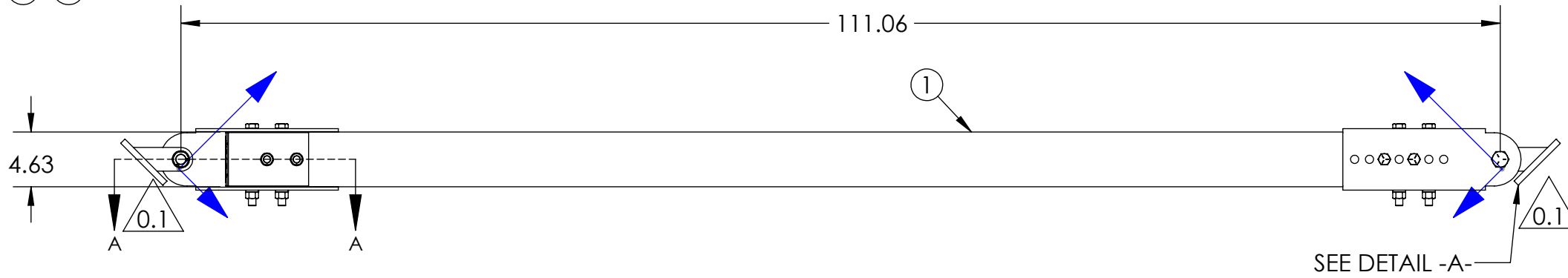
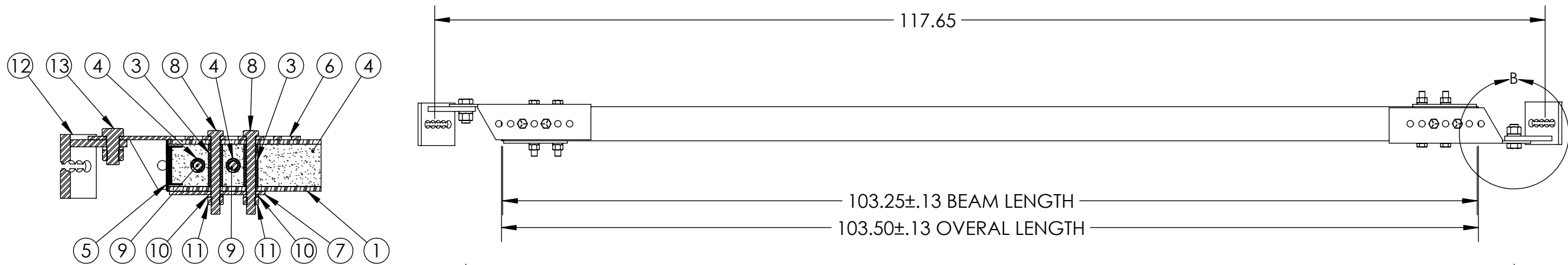
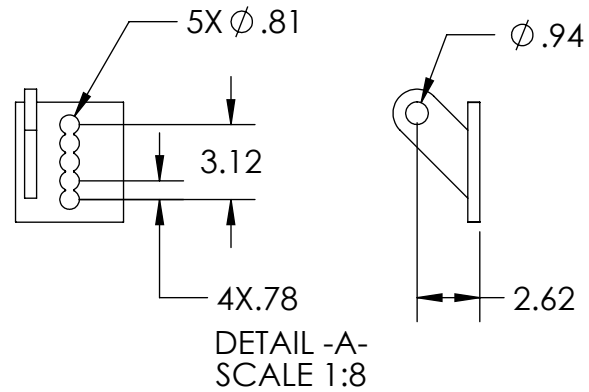


ITEM NO.	PART NUMBER	DESCRIPTION	DESCRIPTION 2	QTY
1	FB-103-3-3000-2	BEAM, PULTRUDED STOCK	SERIES 3000 x 103-1/4 in, GRAY	1
2	TG0688-0039	BUSHING	11/16 in x 3-15/16 in	4
3	TG0688-0040	BUSHING	11/16 in x 3 in	4
4	FOAM	-	-	1
5	EC30-0002-2	END CAP	SERIES 3000, GRAY	2
6	BK-0038	BRACKET, BRACE		2
7	PL-0033	PLATE, X-BRACE		2
8	HB0625-0018	HEX BOLT	5/8 in - 11 x 5-1/2 in	4
9	HB0625-0002	HEX BOLT	5/8 in - 11 x 6-1/2 in	4
10	LW0625-0004	LOCK WASHER	5/8 in	8
11	HN0625-0004	HEX NUT	5/8 in - 11	8
12	BK-0067	BRACKET ASSEMBLY, BRACE	HD, RIGHT	2
13	HB0875-0013	HEX BOLT	7/8 in - 9 x 2 in	2
14	LW0875-0010	LOCK WASHER	7/8 in	2
15	HN0875-0006	HEX NUT	7/8 in - 9	2

PUPI[®]
www.pupicrossarms.com

REVISIONS			
REV.	DESCRIPTION	DATE	INITIALS
0.1	REPLACE BK-0041 WITH BK-0067, CHANGE DRAWING FORMAT	2014-11-06	RAF



-----UNLESS OTHERWISE SPECIFIED-----
 DIMENSIONS ARE IN INCHES
 INTERPRET DIM AND TOL PER ASME Y14.5-2009
 ANGULAR: MACH ±2°
 BEND ±2°
 TWO PLACE DECIMAL ±0.02
 THREE PLACE DECIMAL ±0.005

PROPRIETARY AND CONFIDENTIAL
 THE INFORMATION CONTAINED IN THIS DRAWING IS
 THE SOLE PROPERTY OF GEOTEK. ANY REPRODUCTION
 IN PART OR AS A WHOLE WITHOUT THE WRITTEN
 PERMISSION OF GEOTEK IS PROHIBITED.

STATE: RELEASED 2014-11-07
 DRAWN: RAF 2013-05-08
 CHECKED: ENG 2014-11-07
 APPROVED: ENG 2014-11-07
 MATERIAL:
 FINISH:
 REPLACES:

THIRD ANGLE PROJECTION

GEOTEK
A Whole New World of Composites

1421 SECOND AVE NW
 STEWARTVILLE, MN 55976
 (800) 533-1680
 www.geotekinc.com

DESCRIPTION:
KNEE BRACE ASSEMBLY
 SERIES 3000, 117.65 in

SIZE: DWG. NO. **B** K0118TMSPX62
 SCALE: 1:12 WEIGHT: 76.73 LBS

REV: **0.1**
 SHEET 1 OF 1