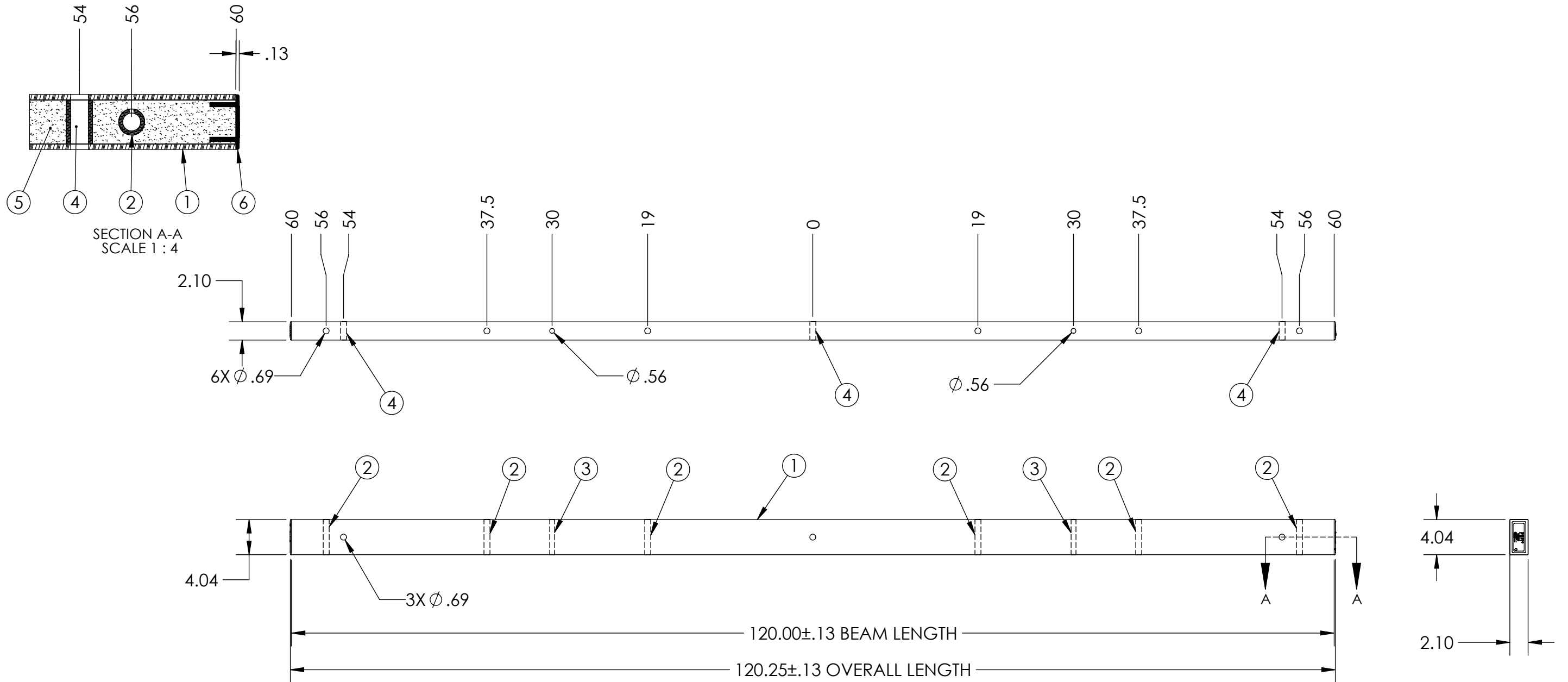


ITEM NO.	PART NUMBER	DESCRIPTION	DESCRIPTION 2	QTY
1	FB-120-1000-2	BEAM, PULTRUDED STOCK	SERIES 1000 x 120 in, GRAY	1
2	TG0688-0015	BUSHING	11/16 in x 3-11/16 in	6
3	TG0563-0013	BUSHING	9/16 in x 3-11/16 in	2
4	TG0688-0016	BUSHING	11/16 in x 1-11/16 in	3
5	FOAM	-	-	1
6	EC10-0007-2	END CAP	SERIES 1000, GRAY	2

PUPI[®]
www.pupicrossarms.com

REVISIONS			
REV.	DESCRIPTION	DATE	INITIALS
1.0	ADD REPLACES PREVIOUS ITEM NOTE IN TITLE BLOCK	2011-11-29	EFH
1.1	REDRAWN IN SOLIDWORKS	2013-02-01	RAF



NOTES:
1. CENTER OF MOUNT HOLE(S) TO HOLES TOLERANCE ±0.06

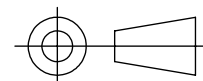
-----UNLESS OTHERWISE SPECIFIED-----
DIMENSIONS ARE IN INCHES
INTERPRET DIM AND TOL PER ASME Y14.5-2009
ANGULAR: MACH ±2°
BEND ±2°
TWO PLACE DECIMAL ±0.02
THREE PLACE DECIMAL ±0.005

PROPRIETARY AND CONFIDENTIAL
THE INFORMATION CONTAINED IN THIS DRAWING IS
THE SOLE PROPERTY OF GEOTEK. ANY REPRODUCTION
IN PART OR AS A WHOLE WITHOUT THE WRITTEN
PERMISSION OF GEOTEK IS PROHIBITED.

STATE: RELEASED 2013-03-05
DRAWN: RAF 2013-02-01
CHECKED: BRH 2013-03-05
APPROVED: BRH 2013-03-05

MATERIAL:
FINISH:
REPLACES:
T1000-120-05X

THIRD ANGLE PROJECTION



GEOTEK
A Whole New World of Composites
1421 SECOND AVE NW
STEWARTVILLE, MN 55976
(800) 533-1680
www.geotekinc.com

DESCRIPTION:
TANGENT ASSEMBLY, SERIES 1000
120 in, RUS 05

SIZE: DWG. NO. **B T100012005X2** REV: **1.1**
SCALE: 1:12 WEIGHT: 19.03 LBS SHEET 1 OF 1